

20 mm Recoilless De-Armer Disruptor



Model : EAD-20S, EAD-2050



EAD-20S and EAD-2050 are recoilless Disruptor- Dearmer designed for disrupting the IEDs and UXOs with a high probability of avoiding detonation. It answers for requirement of a medium powered and accurate disruptor. The disruptor can be employed with a multitude of support arrangements like its stand or on a EOD robot with its mount. The disruptor design pays special attention to simplicity, safety and speed of operation. Recoilless operation is achieved by ejecting water load rearward at the same time as the forward load.

Key features

- ***Manufactured with Stainless Steel & Aluminum corrosion free alloys.***
- ***98% Recoilless features and is lightest disruptor for Robot applications.***
- ***Special attachment for normal camera stand for quick aiming and multiple attack angles.***
- ***Variety of De-armor function projectiles- Solid and frangible***
- ***Picatinny rail for Laser and other aiming features.***
- ***Diverse power carts options - Standard electrically initiated 0.5-inch or 20mm or percussion debulleted carts.***
- ***Quick and Zero error assembly features with keyway and Acme Threads.***
- ***Multiple attachments and optional accessories make it true fourth generation disruptor.***



The disruptor breech has a safety pin to keep the terminals short and cartridge gets connected just when it has been deployed. This enables minimum time at IED ensuring speedy yet safe deployment. The disrupter can be provided with standard 0.5 inch (EAD-2050) or 20mm cartridge (EAD-20).

Specifications

Item	Specifications	Item	Specifications
Length assembled	525 mm	Width Recoil Body	150 mm
Filled Water qty	210 cc	Bore diameter	20 mm
Attack Height with stand	Min 0.5 meters Max 1.3 meters	Weights	Disruptor 6 kg Stand 2 Kg Aiming device 0.2 Kg
Stand turn azimuth	360°	Stand turn elevation	180°
Danger area forward	140 m	Danger area rear	30 m
Cartridge EAD-20S	20mm electrical CT-20/ 12bore	Cartridge EAD-2050	0.5 inch electrical CT-05, CT-05W
Recoil system	98% recoilless		
Breech electric firing	Standard breech non-leaded carts -450 grams) Separate breech for leaded carts - 300 grams (optional)		
Standard accessories	Packing & carrying box, Tripod stand, Removable Cleaning Brush, Push rod, Spanner Tube, Dual pin wrench, Water bottle, Allen key, Recoil sleeve head, Recoil sleeve.		
Optional Accessories	Tough polypropylene or Cardura case, Laser aiming head, Robot Mount, laser pointer, light, range finder, rifle scope, Day night LCD sight, remote detonation system integration, Penetrator end caps Accessories to make De-armour- Thread protector, Steel Slug Blunt, Steel slug chisel, Steel Slug pointed nose, Cutting Fork, blade slug, Loading sleeve, Special slugs can be made on customer's requirement.		
Ignition voltage	Works with commercial exploders/ blasting machines.		
Composition	Specially treated Stainless Steel alloy and Aluminum alloy recoil body.		



Cartridge Versatility

The disruptor can be supplied with 20 mm cartridges (EAD-20), .50 calibers (12.7 mm) cartridges (EAD-2050), or 12 Bore cartridge option. Since many EOD establishments are already using 0.5 inch cartridge with other EOD systems we do have option that the disruptor is provided according to their existing cartridge type. This ensures much greater logistical flexibility.



20 mm cartridge



0.5 inch cartridge with lead
as well as without lead

Breech types

Three types of breech systems are available:

Standard Breech with Safety Pin:

- Designed to fire electrically initiated cartridges (non-leaded 20 mm or 0.5 inch) which is the standard breech type.

Breech for Leaded Cartridges:

- Specifically configured for legacy electrically initiated 0.5 inch cartridges with lead.

Specialized Breech for Percussion Firing:

- Capable of firing 12-bore cartridges or 0.5-inch cartridges, initiated by an electrical impulse.
- Includes a debulleting kit, allowing the use of standard 0.5-inch cartridges.

Robot installation

- These disruptors are ideally suited for installation on Robots due its superb recoilless feature. If the mounting details of the robot are provided. An installation adapter can be provided. These adapters also can be integrated with camera and laser pointers.



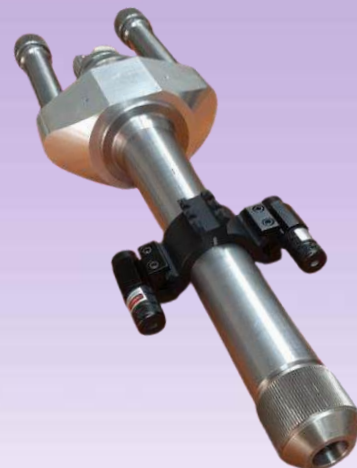


Picatinny Rails & Aids

Our IED disruptor is equipped with a variety of aids to ensure accurate firing. To enhance its versatility and precision, we incorporate a Picatinny rail system, which allows the attachment of a wide range of accessories. These include aiming devices, laser designators, optical sights, and other modular components, enabling operators to adapt the disruptor to different scenarios and operational needs.

Laser sight (optinal)

Two laser sights are installed on either sides of the disruptor mount on Picatinny rail for a quick identification of the targeted area of the disruptor.

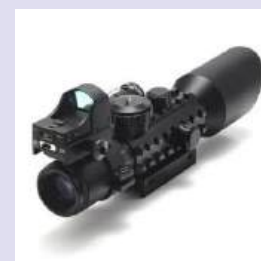


Range Finder (optinal)

With 225 grams of weight, it is a handy tool for decision making at the incident control point as well at the IED. Can be installed on the rails of the disruptor. Can measure upto 700 meters and displays on illuminant OLED screen.

Multi-function 3-10x42 Rifle scope (optinal)

In this all in one solution we have a laser sight, Optical scope and a red dot sight. It can easily be installed and removed from the Picatinny rail. You can add in more accessories on this unit to add in more features.



LED Flashlight with Laser sight (optinal)

Quick release mounting of a laser sight and flashlight. Flashlight / laser sight can be operated together as well as independently. Black solid ABS body. Operate with 2 x CR123 battery.



Day & Night LCD sight (optinal)

Aiming the target on disruptor mounted riflescope can be aided with a vision kit and LCD. During the night a waterproof 850nm Infrared LED illumination gives good vision for 350 Meters. Camera provides a sharp and clear image both during day also. Easily switch between day (Color) and night mode (IR monochrome).



Slugs and Caps options

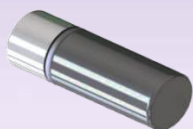
Penetrator Cap not only seals the water but with its metallic tip achieves a entry hole in metallic walled IEDs



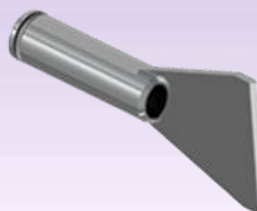
Closure Cap seals water inside the barrel when attaching soft targets



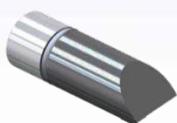
Dearmer Slugs types which can be fired



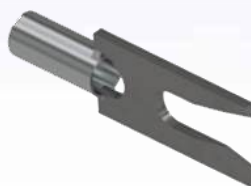
Blunt Slug
Blunt ended steel projectile, fitted with an 'O' Ring, used in conjunction with 1 inch barrel to attack UXB fuse



Blade Slug
Blade slug is designed to cut in two half like the pipe bomb.



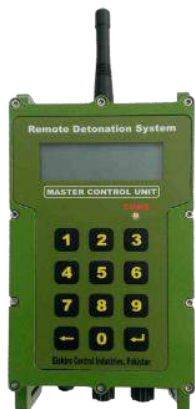
Chisel Slug
Chisel end shaped projectile is used with 1 inch barrel for cutting action.



Fork Slug
Fork

RF System for disruptors

Integration of RF initiation system with the disruptor provides flexibility and speed of IEDD operation. The EOD operator gets relived to carry the demolition wire to the IED. Our Wireless Initiation system RDS-6722 is provided with mounting & fittings to be installed on Disruptor's standard mount or the system can be installed with International Picatinny rail mount standard.



Quick clip-on type also offered

